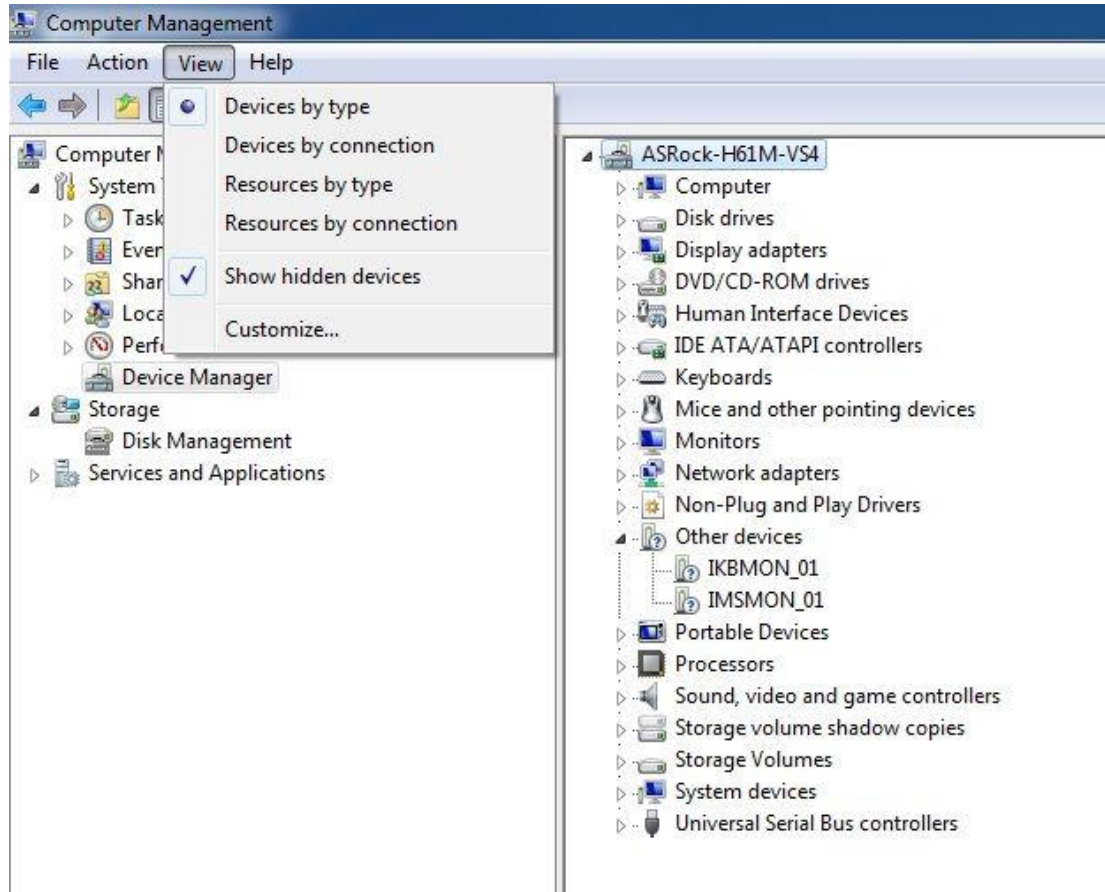


1. **Q:** There still have two unknown devices "IKBMON_01" and "IMSMON_01" in device manager on H61 series motherboards, after install all drivers from support CD, what driver should I install for them?



A: Please update Intel Smart Connect Technology driver for these devices.

Intel Smart Connect Technology driver download link:

[http://download.asrock.com/drivers/Intel/SATA/SmartConnect\(v4.1.40.2143_PV\).zip](http://download.asrock.com/drivers/Intel/SATA/SmartConnect(v4.1.40.2143_PV).zip)